

5포트 파일럿형 솔레노이드 밸브 (SV)

SV1000 시리즈 (Rc(PT) 1/8)

- 보디폭 18.0mm
- 통과유량 700 l/min (5bar)

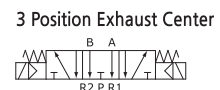
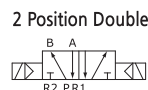
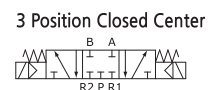
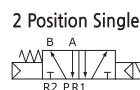


주문형식

SV 11 30 - 110V - CL - P - 01

- ① 솔레노이드밸브
- ② 전환방식
 - 1 - 2위치 싱글
 - 2 - 2위치 더블
 - 3 - 3위치 Closed Center
 - 4 - 3위치 Exhaust Center
 - 5 - 3위치 Pressure Center
- ③ 정격전압
 - 220V - AC 220V
 - 110V - AC 110V
 - 24V - AC 24V
 - D24V - DC 24V
- ④ 코일종류
 - 무기호 - 코일없음
 - G - 리드선방식
 - C - 3 Pin 코일 + 커넥터
 - CL - 3 Pin 코일 + 램프커넥터
- ⑤ 수동조작방식
 - P - 푸시버튼
- ⑥ 나사종류
 - 무기호 - Rc(PT)
 - N - NPT
 - G - G(PF)
- ⑦ 관접속구경
 - 01 - Rc(PT) 1/8

표시기호



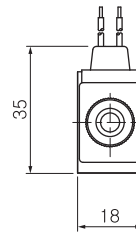
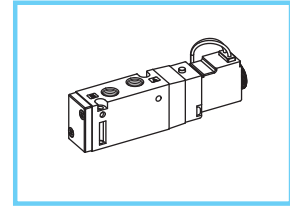
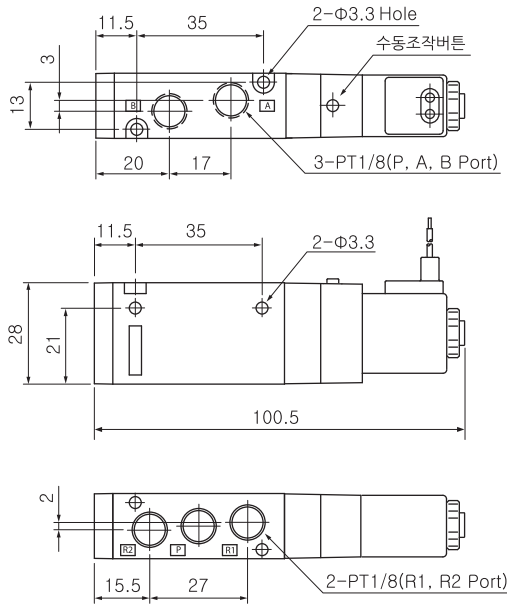
표준사양

항목	5포트 2위치	5포트 3위치
사용유체	압축공기	
주위 및 사용유체온도	5 ~ 60°C	
사용압력	1.5~10bar	2~10bar
유효단면적(5bar시)	12.6mm ²	9.0mm ²
응답시간(5bar시)	25ms 이하	35ms 이하
최대작동빈도	5c/sec	3c/sec
급유	불필요(단, 급유시 터빈유 1종 (ISO VG32))	
수동조작	누름식버튼	
코일절연의종류	F종상당	
허용전압변동	정격전압의±10%	
소비전력	AC:3.6VA(60Hz) / DC:2.5W	

외형치수도(mm)

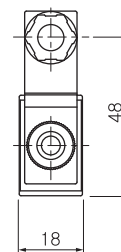
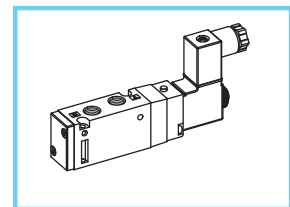
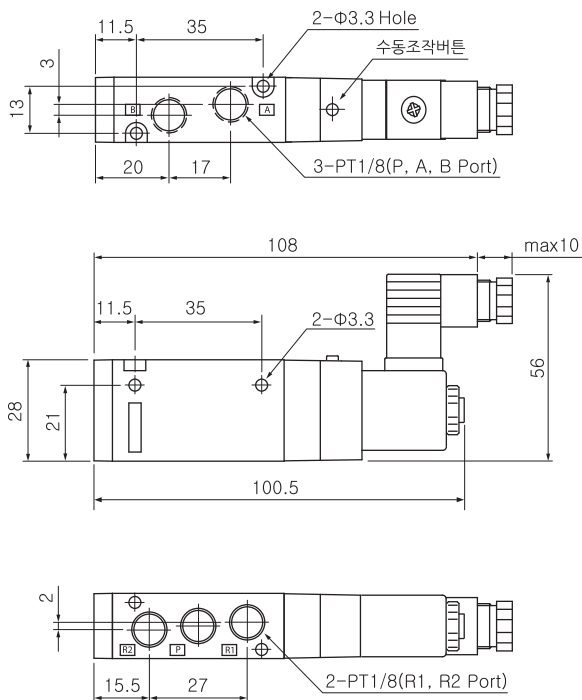
2위치 / 5포터 싱글형(그로메트 타입)

SV1130-□□□V-G-...



2위치 / 5포터 싱글형(커넥터 타입)

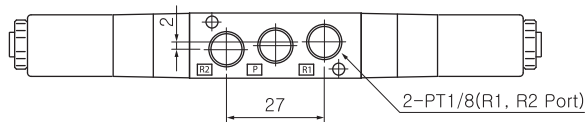
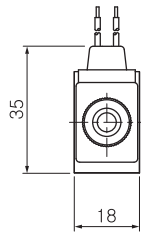
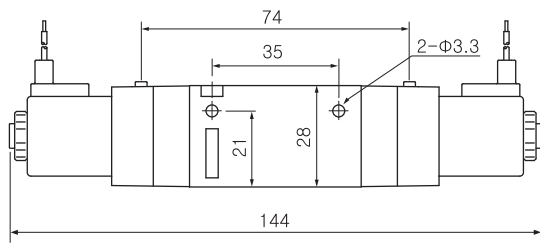
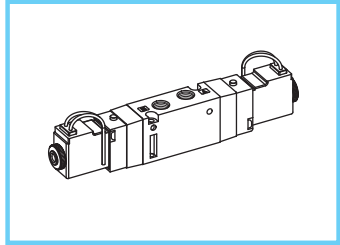
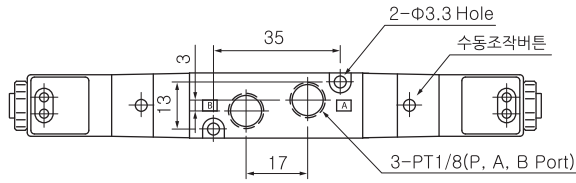
SV1130-□□□V-C□-...



외형치수도(mm)

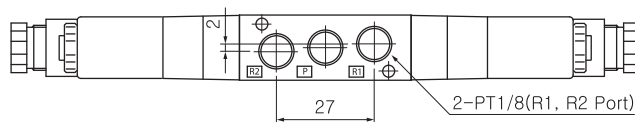
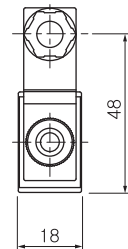
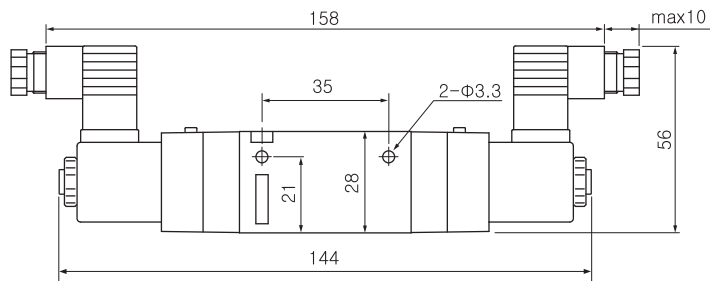
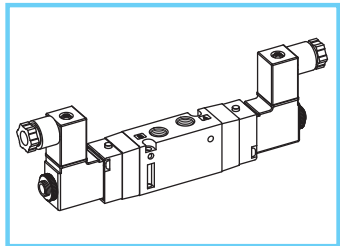
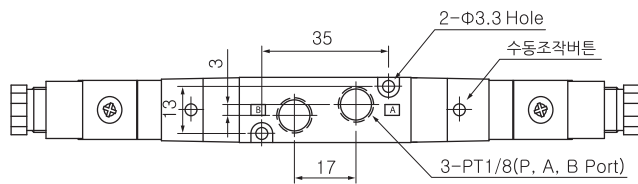
2위치 / 5포터 더블형(그로메트 타입)

SV1230-□□□V-G-...



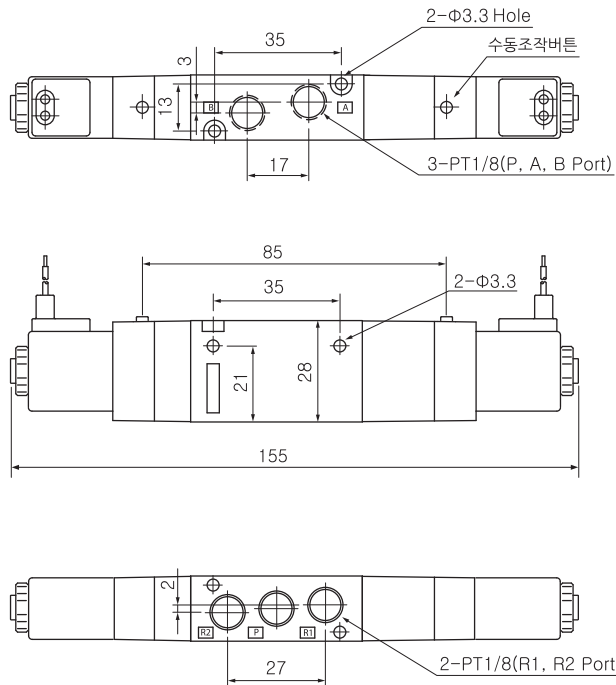
2위치 / 5포터 더블형(커넥터 타입)

SV1230-□□□V-C□-...

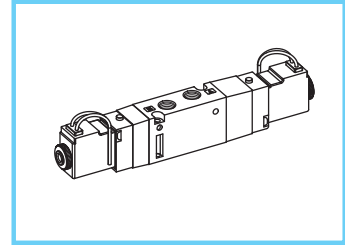


외형치수도(mm)

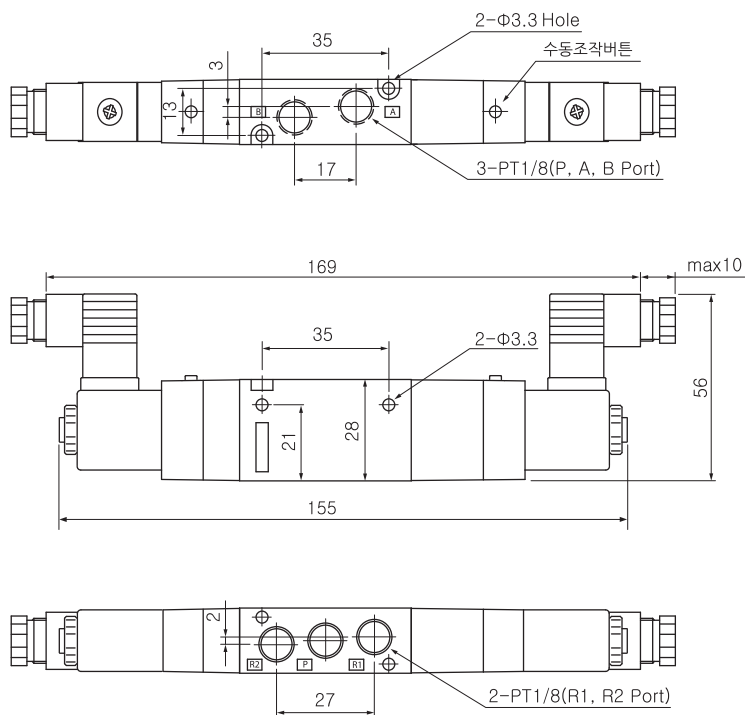
3위치 / 5포터 더블형(그로메트 타입)



SV1330-□□□V-G...



3위치 / 5포터 더블형 (커넥터 타입)



SV1330-□□□V-C...□...

